



DEF DISPENSING SOLUTIONS



HEAVY-DUTY PORTABLE PACKAGES



Model 550 014

Heavy-duty portable air operated package for 55 gallon drum with dispense hose includes 1305 three wheel heavy-duty cart with 2845 ClassicFlo diaphragm pump, 680 300 DEF meter, 750 501 ¾" x 12' dispense hose, stainless steel fittings, ¼" filter regulator combo, ¼" coupler and connector and 688 303 stainless steel automatic nozzle. *(Drum not included; please see page 10 for ordering requirements)*

ABOUT HEAVY-DUTY AIR OPERATED PACKAGES

All Samson heavy-duty air operated packages are made for use in rugged operating conditions. All fittings are stainless steel which will stand up to the demands of heavy equipment shops. All components have a mounting bracket for rigid support in the demanding conditions of heavy-duty shops. Package components do not depend on the strength of a fitting for their support. For added protection, an optional DEF filter is available: order part number 910 305 added to your DEF package.

HEAVY-DUTY STATIONARY PACKAGES

Model 555 004

Diaphragm pump & hose reel package includes 2845 ClassicFlo diaphragm pump, 506 702 30' hose reel, 680 300 meter, 955 air filter regulator combo, 950 321 mini air shut off valve, 5' fluid connecting hose, 5' air connecting hose, 8' suction hose, 688 303 stainless steel automatic nozzle and choice of mounting bracket. *(Please see page 10 for ordering requirements)*



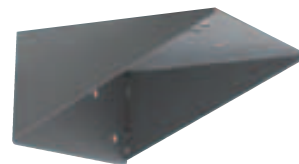
Model 550 367

Diaphragm pump & hose package includes 2845 ClassicFlo diaphragm pump, 750 501 ¾" x 12' dispense hose, 680 300 meter, 955 air filter regulator combo, 950 321 mini air shut off valve, 5' fluid connecting hose, 5' air connecting hose, 8' suction hose, 688 303 stainless steel automatic nozzle and choice of mounting bracket. *(Please see page 10 for ordering requirements)*



All stationary packages are built on a 13" x 21" powder coated steel plate. Depending on the application, a wall bracket (2086) or tote bracket (360 106) is included in the package.

Specify when ordering which bracket you wish to receive



Model 2086



Model 360 106

ELECTRIC PUMP PACKAGES



Model 555 111 Portable Package

- 120 VAC electric pump complete package with portable drum cart
 - 1304 heavy-duty cart with large pneumatic tires; allows for easy maneuvering of cart
 - Large steering rear caster; built in brake for safe and secure dispensing
 - 94112072 120 VAC stainless steel centrifugal pump; 8 GPM flow rate; 10' power cord
 - 750 501 ¾" x 12' dispense hose
 - 680 303 stainless steel automatic shut off nozzle
 - 680 300 battery powered digital meter with display
- (Drum not included; please see page 10 for ordering requirements)*

Model 555 112 Stationary System

- 120 VAC electric pump complete stationary package
 - 94112072 120 VAC stainless steel centrifugal pump; 8 GPM; 10' power cord
 - 506 702 30' hose reel
 - 680 303 stainless steel automatic nozzle
 - 680 300 battery powered digital meter with display
 - Choice of mounting bracket
- (Please see page 10 for ordering requirements)*



(shown with plate mounted on 360 106 tote mounting bracket)

ASSEMBLED CUBET TANK PACKAGES

All Cubet tank packages come assembled and include the MicroMatic coupler system. This allows product delivery by uncoupling the suction hose from the tank and utilizing a delivery hose with the matching MicroMatic coupler for a contamination free delivery.

All Cubet tank packages include a 30' hose reel, inline meter, and automatic nozzle. An optional DEF filter is available; order part number 910 305 added to your Cubet DEF package.

Air Operated Cubet tank packages include a 13 GPM diaphragm pump, air shut off ball valve, air regulator/filter, and 5' air connecting hose.

Electric Cubet tank packages include a 120 VAC 60 hertz electric pump with 10' cord and grounded plug.



550 004 140

| | |
|-------------|---|
| 550 004 140 | 140 CUBET PACKAGE WITH AIR PUMP & REEL |
| 550 004 230 | 230 CUBET PACKAGE WITH AIR PUMP & REEL |
| 550 004 330 | 330 CUBET PACKAGE WITH AIR PUMP & REEL |
| 555 112 140 | 140 CUBET PACKAGE WITH ELECTRIC PUMP & REEL |
| 555 112 230 | 230 CUBET PACKAGE WITH ELECTRIC PUMP & REEL |
| 555 112 330 | 330 CUBET PACKAGE WITH ELECTRIC PUMP & REEL |



550 004 230 (pictured with optional 910 305 filter)



555 112 140 (pictured with optional 910 305 filter)

STANDARD-DUTY PORTABLE PACKAGE



Model 550 357

Standard-duty portable air operated package for 55 gallon drum with dispense hose includes 1305 three wheel heavy-duty cart with 2845 ClassicFlo air operated diaphragm pump, 680 300 DEF meter, 750 500 ½" x 12' dispense hose, poly fittings, ¼" filter regulator combo, ¼" coupler and connector, and 688 303 automatic stainless steel nozzle. *(Drum not included; please see page 10 for ordering requirements)*

HAND OPERATED PACKAGES



Model 801 301 Hand Pump Package

Includes 8013 hand pump, 750 500 ½" x 12' dispense hose, 680 300 meter, and 688 301 manual nozzle. *(drum not included)*



Model 801 302 Hand Pump Package

Includes 8013 hand pump, 750 500 ½" x 12' dispense hose, 688 301 manual nozzle. *(drum not included)*



Well proven with years of service, Classic Flo diaphragm pumps provide a wide flow range to solve many DEF applications. From a 3 GPM portable package to a 164 GPM delivery system, this series of pumps will dependably meet your needs.



Model 2825



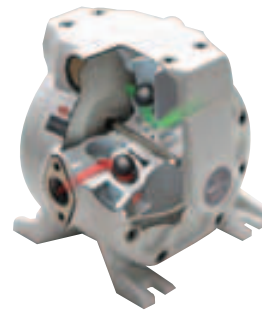
Model 2844

WHY AIR?

For years, air operated pumps have been used in vehicle maintenance shops to handle fluids. The primary reason is because air-operated pumps stall against back pressure. When the dispense handle is opened, the fluid flows. When the handle is closed and the pressure created by the closed handle equals the incoming air pressure, the pump stops. Electric pumps must have a pressure relief bypass or a pressure sensing switch to turn off the pump when the handle is closed. Each time the handle is opened and closed, this switch or valve must operate. This is an added wear item that is not necessary when using air. Plus, the vehicle maintenance service network is very familiar with air operated pumps.



Direct Flo technology completely changes the manner in which diaphragm pumps operate with a revolutionary design. This design significantly increase pump performance and dramatically increases the durability of the pump.



Model 552 015

| PART NUMBER | DESCRIPTION | GPM | FLUID INLET/OUTLET | BODY | DIAPHRAGMS | BALLS & O'RINGS |
|-------------|---------------------------|-----|--------------------|---------------|------------|-----------------|
| 2825 | CLASSICFLO DIAPHRAGM PUMP | 3 | 1/4" NPTF | POLYPROPYLENE | TEFLON | TEFLON |
| 2845 | CLASSICFLO DIAPHRAGM PUMP | 13 | 1/2" NPTF | POLYPROPYLENE | SANTOPRENE | EPDM |
| 552 015 | DIRECTFLO DIAPHRAGM PUMP | 14 | 1/2" NPSM (F) | POLYPROPYLENE | HYTREL | POLYPROPYLENE |
| 2841 | CLASSICFLO DIAPHRAGM PUMP | 30 | 3/4" NPTF | POLYPROPYLENE | SANTOPRENE | EPDM |
| 2842 | CLASSICFLO DIAPHRAGM PUMP | 45 | 1" NPTF | POLYPROPYLENE | SANTOPRENE | EPDM |
| 2843 | CLASSICFLO DIAPHRAGM PUMP | 107 | 1 1/2" NPTF | POLYPROPYLENE | SANTOPRENE | EPDM |
| 2844 | CLASSICFLO DIAPHRAGM PUMP | 164 | 2" NPTF | POLYPROPYLENE | SANTOPRENE | EPDM |

INDIVIDUAL COMPONENTS



ALUMINUM HOSE REEL

Epoxy powder coated aluminum base and arm with composite spool and stainless steel fluid path provide outstanding compatibility with DEF and overall corrosion protection. Ball bearing swivel provides easy hose movement and years of dependable service; unique six roller outlet increases hose life and prevents pinching hose.

| Model Number | Inlet | Delivery Hose | Delivery Hose Fitting | Inlet Hose | Inlet Hose Fitting | PSI |
|--------------|---------------|---------------|-----------------------|------------|--------------------|-----|
| 506 702 | 3/4" BSPP (M) | 1/2" x 30' | 3/4" BSPP (M) | 1/2" x 30" | 3/4" BSPP (M) | 210 |
| 506 722 | 3/4" BSPP (M) | 1/2" x 50' | 3/4" BSPP (M) | 1/2" x 30" | 3/4" BSPP (M) | 210 |



STEEL HOSE REEL

Heavy-duty steel double pedestal arm hose reel with full ported 3/4" stainless steel fluid path. Robust reinforced steel with epoxy powder coat finish handles up to 50' of 3/4" hose. Unique heavy-duty spring insures years of trouble free service. Adjustable mounting arm allows multiple mounting options.

| Model Number | Inlet | Delivery Hose | Delivery Hose Fitting | Inlet Hose | Inlet Hose Fitting | PSI |
|--------------|---------------|---------------|-----------------------|------------|--------------------|-----|
| 7551 | 3/4" BSPP (F) | 3/4" x 50' | 3/4" BSPP (F) | 3/4" x 36" | 3/4" BSPP (M) | 210 |
| 7552 | 1" BSPP (M) | 3/4" x 30' | 1" BSPP (F) | None | None | 210 |
| 7553 | 3/4" BSPP (F) | 3/4" x 30' | 3/4" BSPP (F) | 3/4" x 36" | 3/4" BSPP (M) | 210 |
| 7554 | 3/4" BSPP (F) | 3/4" x 40' | 3/4" BSPP (F) | 3/4" x 36" | 3/4" BSPP (M) | 210 |
| 7555 | 1" BSPP (M) | 3/4" x 40' | 1" BSPP (F) | None | None | 210 |
| 7556 | 1" BSPP (M) | 3/4" x 50' | 1" BSPP (F) | None | None | 210 |
| 7557 | 3/4" BSPP (F) | None | None | None | None | 210 |
| 7558 | 1" BSPP (M) | None | None | None | None | 210 |

DEF HOSE

| Item Number | Hose ID | Hose Length | Fitting | Fitting | PSI |
|-------------|---------|-------------|----------------------|----------------------|--------------|
| 750 500 | 1/2" | 12' | 1/2" NPT (M) P | 1/2" NPT (M) P | 210 |
| 750 501 | 3/4" | 12' | 3/4" NPT (M) SS | 3/4" NPT (M) SS | 210 |
| 750 502 | 3/4" | 3' | 3/4" NPT (M) SS | 3/4" NPT (M) SS | SUCTION HOSE |
| 750 503 | 1/2" | 3' | 1/2" NPT (M) P | 1/2" NPT (M) P | 210 |
| 750 504 | 1/2" | 6" | OPEN (for hose barb) | 1/2" NPT (M) P | 210 |
| 750 505 | 3/4" | 50' | 3/4" BSPP (M) SS | 3/4" BSPP (M) SS | 210 |
| 750 506 | 3/4" | 8' | 3/4" NPT (M) SS | 3/4" NPT (M) SS | SUCTION HOSE |
| 750 507 | 3/4" | 8' | 3/4" NPT (M) SS | 3/4" BSPP (M) SS | SUCTION HOSE |
| 750 508 | 3/4" | 30' | 3/4" BSPP (M) SS | 1" BSPP (F) SS | 210 |
| 750 509 | 3/4" | 8' | 3/4" BSPP (M) SS | 3/4" BSPP (M) SS | SUCTION HOSE |
| 750 510 | 3/4" | 3' | 3/4" BSPP (M) SS | 3/4" BSPP (M) SS | 210 |
| 750 511 | 3/4" | 12' | 3/4" BSPP (M) SS | 3/4" BSPP (M) SS | 210 |
| 750 513 | 3/4" | 8' | 3/4" BSPP (M) SS | OPEN (for hose barb) | SUCTION HOSE |
| 750 514 | 3/4" | 40' | 3/4" BSPP (M) SS | 1" BSPP (F) SS | 210 |
| 750 515 | 3/4" | 30' | 3/4" BSPP (M) SS | 3/4" BSPP (M) SS | 210 |
| 750 516 | 3/4" | 40' | 3/4" BSPP (M) SS | 3/4" BSPP (M) SS | 210 |
| 750 517 | 3/4" | 50' | 3/4" BSPP (M) SS | 1" BSPP (F) SS | 210 |

INVENTORY MANAGEMENT SYSTEMS

Samson's IMS system allows a wide range of dispense control and inventory management for DEF Systems. IMS system can operate as a stand alone unit or be interfaced with a computer; a wide range of printer options are available.

- 381 000** IMS keypad without internal ticket printer
- 381 001** IMS keypad with internal printer
- 381 002** President keypad for stand alone use and internal ticket printer
- 381 003** President keypad with PC interface (NTPC); and internal ticket printer
- 381 004** President keypad for stand alone use; no internal ticket printer
- 381 005** President keypad with PC interface (NTPC); no internal ticket printer

- 381 550** Dispense point control module allows DEF to be controlled by adding a pulser and solenoid, a wide range of flow rates are available

Samson's IMC console offers an economical control method for DEF. The system allows tank monitoring, PC interface, and other options.

- 381 190** Console for stand alone use
- 381 191** Console with PC interface, software & USB cable



Control systems are each different; contact Samson for assistance. We will help you design a system to meet your specific needs including free site visits and surveys.

Your existing card reader system for fleet fueling can control your DEF dispenser; ask us how!

METERS, PULSERS, SOLENOIDS

Model 680 300

Digital meter totalizes in gallons or liters; dispenses in pints, quarts, gallons or liters; 1/2" BSPP (F), 8 GPM, 145 PSI

Model 680 301

Pulser; 1/2" BSPP (F) 8 GPM

Model 680 299

High volume pulser; 1" BSPP (F) 25 GPM

Model 389 002

Stainless steel solenoid; 1/2" BSPP (F) 24 VDC; normally closed

Model 389 003

Stainless steel solenoid; 1" BSPP (F) 24 VDC; normally closed



SUCTION SYSTEMS



Model 910 308 Fine/NPS threads or Model 910 315 Coarse/Buttress Thread
Open suction system (poly) includes bung insert, tool, coupler connector, and drop tube.



Model 910 311

Bung Valve Coupler (stainless steel) for closed suction system. Mates to the valve in bung opening of drum or tote, provides closed connection system for changing containers, has pressure vacuum vent for pumping or filling tank. 3/4" BSPP (F).



Model 910 312 Fine/NPS threads or Model 910 313 Coarse/Buttress Thread

Bung valve; Micromatic stainless steel closed suction system for bung openings. Inserts into bung opening of drum, tote, or tank and provides a closed system for changing containers. Mates with drum valve connector 910 311.



Suction system tube is designed to be slightly longer than the container. This allows the tube to lie at an angle on the bottom of the container and draw as much product as possible from the container.



ORDERING REQUIREMENT

To properly equip your DEF packages, the following information must be provided with each package order:

- What type container is being used
 - Drum
 - Tote; must supply depth of tote
 - Tank; must supply depth of tank
- What is in the bung of the container?
 - Stainless steel Micromatic bung valve
 - Bung shipping plug; no connection method
 - Other; must describe; preferably email picture to customer service

DEF Packages have these options for the container end of the suction hose:

- Bung Valve Coupler only
- Complete bung insert, suction tube, and suction valve
- 3/4" Suction hose with cut hose to fit 3/4" barbed fitting
- Suction hose with 3/4" BSPP (M) stainless steel fitting

Specify if the package includes the optional DEF filter

PUMP MOUNTING METHODS

Samson stationary DEF packages are mounted on a 13" x 21" steel plate. This plate may then be mounted on a wall bracket, tote bracket, or directly on a tank.



Wall mount systems work well for use with drums. The package is securely mounted and allows drum change over without having to support pump package. When using totes, the wall system allows the tote to be changed without having to remove and reinstall the pump package each time the tote is changed.



Tote brackets allow the pump package to be mounted on a bracket that secures to the wire cage of the tote. This allows the package to be securely mounted and, when it is necessary to change the tote, allows the pump package to be moved from empty tote to full tote.





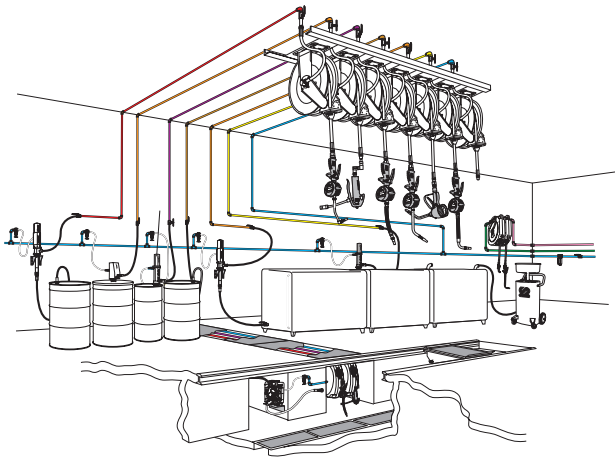
**LOOK TO THE WORLD WIDE LEADER FOR ALL
YOUR LUBRICATION AND FLUID HANDLING NEEDS**

LUBRICATION EQUIPMENT FOR

Cars • Trucks • Buses • Planes • Rails • Industry • Mining • Agriculture



Bulk Systems of any Size



- **Pumps**
- **Reels**
- **Meters**
- **Inventory Management Systems**
- **Portable Equipment**
- **Lube Trucks and Trailers**
- **Nationwide service and installation support**
- **Free facility surveys**

Eastern Region Manager

Jim Moore
(828) 713-3668
jmoore@samsoncorporation.com

Western Region Manager

Tim Bland
(828) 713-8947
tbland@samsoncorporation.com

Southern Region Manager

Neil Londa
(828) 989-9912
nlonda@samsoncorporation.com

Canada

Ronnoco Sales Limited
Kitchener, Ontario
(800) 268-5802
sales@ronnocosales.com

Mexico & Latin America

Efren Gonzalez
Queretaro, Oro Mexico
52 1 442 249 7299
efren.gonzalez@prodigy.net.mx

Corporate Office

One Samson Way, Swannanoa, NC 28778
(828) 686-8511 • (828) 686-8633 Fax
info@samsoncorporation.com
www.samsoncorporation.com